



# GAT MONTHLY MEMBERSHIP PROGRESS REPORT

Results as of: 3/31/2022

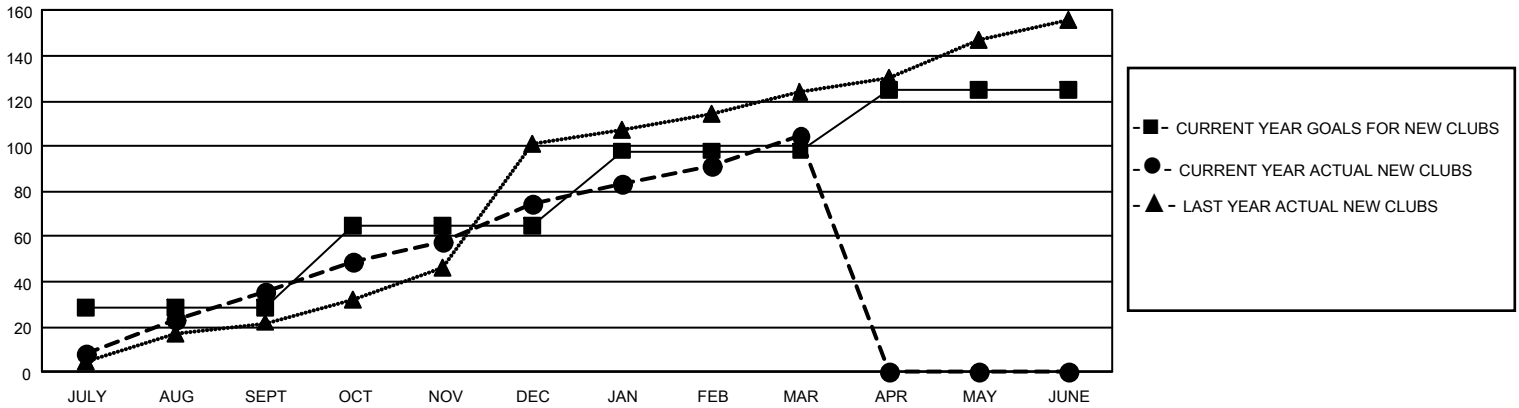
## GAT Constitutional Area 8

REPORT DOES NOT INCLUDE CLUBS IN UNDISTRICTED AREAS.

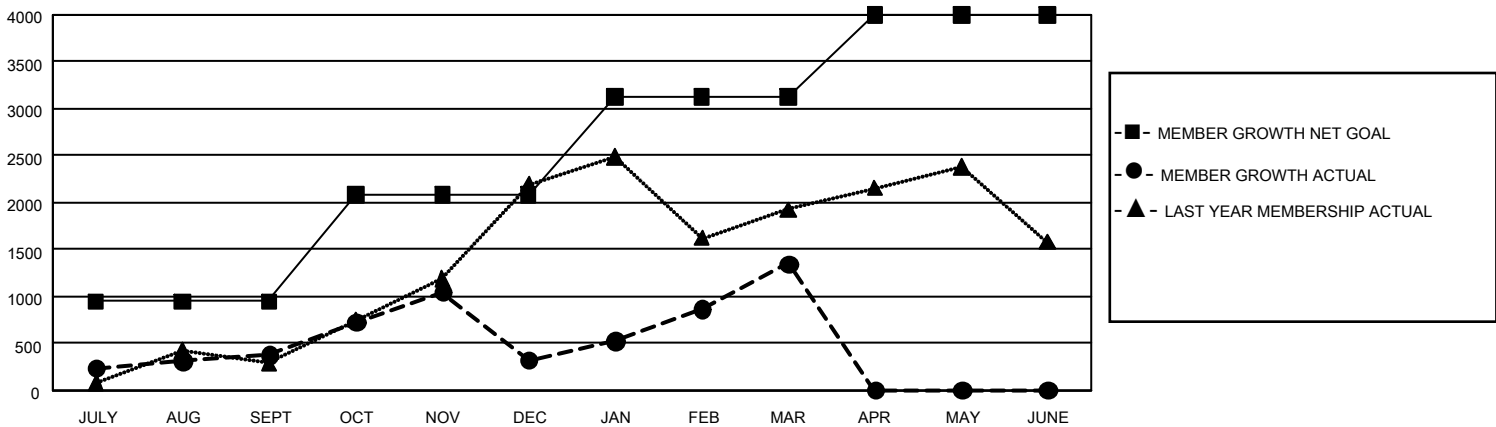
Clubs			
RESULTS FOR 2021-2022			
QUARTER	NEW CLUB GOAL	NEW CLUBS	DROPPED CLUBS
JULY/AUG/SEPT	87	36	35
OCT/NOV/DEC	108	39	43
JAN/FEB/MAR	99	30	17
APR/MAY/JUNE	81	0	0

Members			
RESULTS FOR 2021-2022			
QUARTER	MEMBER GROWTH NET GOAL	MEMBER GROWTH ACTUAL	DROPPED MEMBERS ACTUAL (including transfers)
JULY/AUG/SEPT	945	1,840	1,346
OCT/NOV/DEC	1140	2,803	2,701
JAN/FEB/MAR	1040	2,364	1,177
APR/MAY/JUNE	872	0	0

GOALS AND ACTUAL NEW CLUBS CUMULATIVE



GOALS AND ACTUAL MEMBERS CUMULATIVE



DROPPED CLUBS: 95	928 CLUBS OF 1,536 ADDED 1 OR MORE NEW MEMBERS	<b>GENDER DISTRIBUTION</b>
<b>DROPPED MEMBERS</b>	<a href="#">CLICK HERE FOR CUMULATIVE MEMBERSHIP DATA</a>	MALE 20,691 (59.54%)
DECEASED 165		FEMALE 14,041 (40.40%)
CLUB CANCELLED 1,646		NON BINARY 2 (0.01%)
OTHER 3,411		PREFER NOT TO ANSWER 17 (0.05%)
<b>TOTAL 5,222</b>		TOTAL FAMILY UNIT MEMBERS 4,051
		FAMILY MEMBERS PAYING HALF DUES 2,316